



United Way
Bruce Grey

Give. Volunteer. Act.

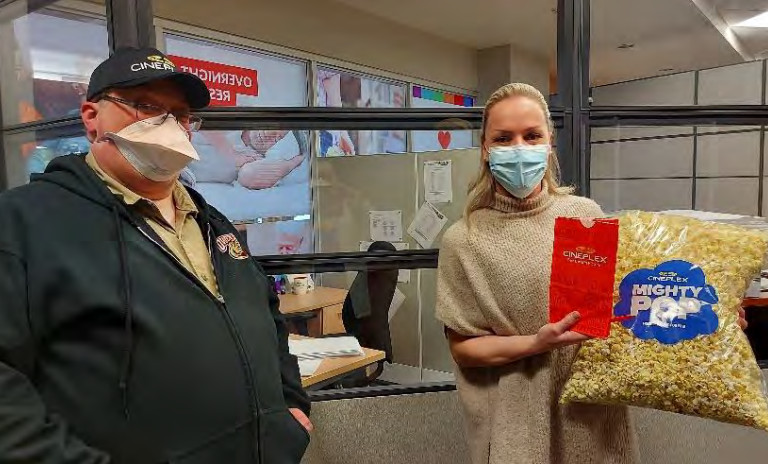
Annual General Report 2022

Making the powerful point!

Change starts here.



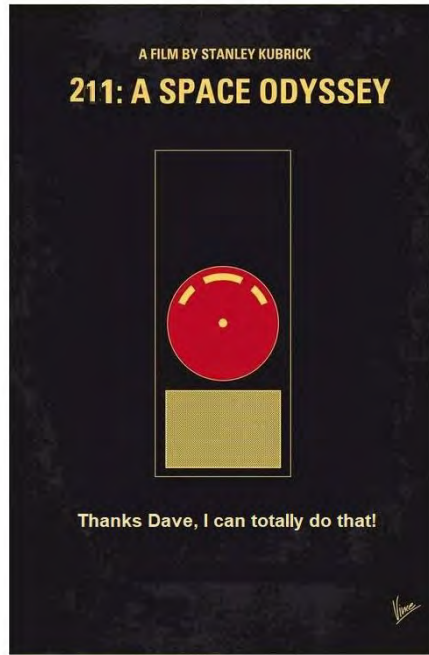
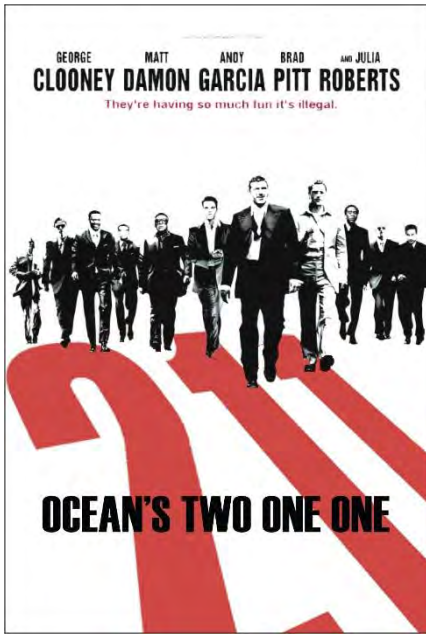
World Popcorn Day with Cineplex Owen Sound – thanking our community partners



Change starts here.



211 Day



no name®

211
for information



Sunday Tailgate Soup Kitchen – downtown OS



In the winter of 2022 local Indigenous women began serving food downtown OS on Sundays, we provided insurance, support and 'back-up'.

Change starts here.

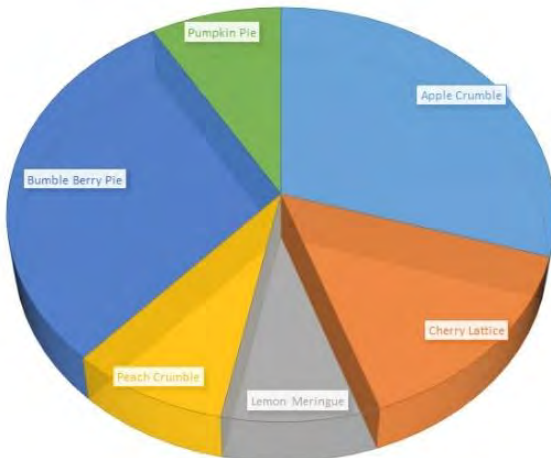


Pi Day 2022

0314 (March 14th)



PIE PI CHART



52 pies sold, runners ran, fun was had!

Change starts here.



The “SOS Project” takes flight



Change starts here.



Team Members:

- Addiction Medicine Physicians
- Nurse Practitioners (Grey Bruce Health Services) – Primary Care and Addictions
- Mental Health Counsellor – CMHA
- Community Paramedics – Grey and Bruce Counties
- Social Navigator – United Way Bruce Grey

The Support Outreach Service “SOS” provides person-centred, multi-disciplinary, multi-sectoral health and social mobile response to improve health outcomes and health equity of highly marginalized individuals who experience barriers in access to traditional health services in Grey and Bruce Counties.

Change starts here.

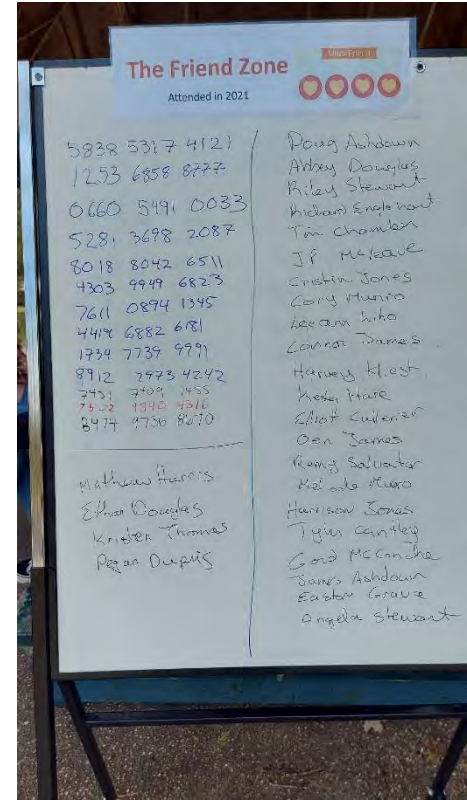
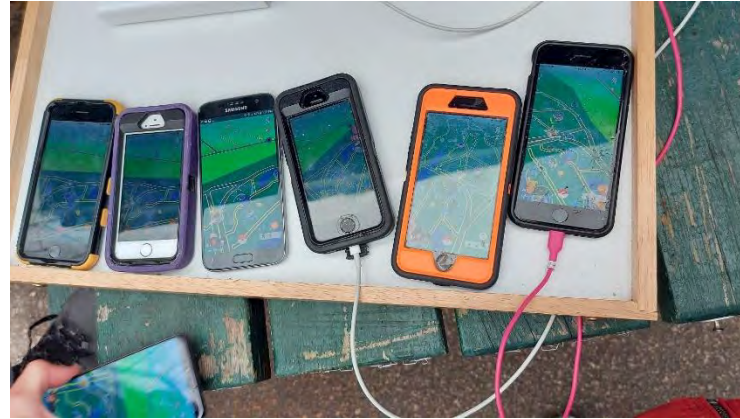


April 23, 2022 - 2 pm to 5 pm
Harrison Park, Owen Sound

ospogo.ca



"Stufful"





Launched



This innovative group will bring together a diverse and inclusive group of Next Generation Leaders to support one cause: making a meaningful impact in the lives of others.

Lunch with Local Leaders



Port Elgin Beach Clean-up



Change starts here.



Supporting after the “Hanover Fire”



FORUM HOTEL ROOMING HOUSE FUNDRAISER

In the early hours of May 19th, a fire broke out at the Forum rooming house in downtown Hanover and the fire quickly spread to a neighbouring apartment and businesses. Fire crews from Hanover and surrounding area responded to the fire along with paramedic services from Grey and Bruce Counties. Thankfully there were no serious injuries and no lives were lost. Unfortunately however, most people lost everything in the fire and many people lost their beloved pets. At the time of this statement, there have been 54 victims that have registered for assistance. All donations received to this fund will help support victims' basic needs and resettling costs in the days and weeks to come.

FOR ONE DAY ONLY: MAY 31ST 2022

GET A **LARGE**
CHEESE OR PEPPERONI PIZZA
FOR ONLY

\$10⁰⁰*

100% FROM EVERY ORDER SALE WILL BE DONATED BACK TO THE FORUM HOTEL ROOMING HOUSE



Offer code: FIRE
519-364-6565

ORDER NOW

*Offer valid on May 31st, 2022 at the following location:
330 3rd Street, Hanover, Ontario
(519) 364-6565
While supplies last.



Change starts here.



Supporting the Owen Sound Pride Parade with Grey Bruce Pride



Change starts here.



Backpack Program & Stuff the Bus!





21.5% increase in the number of high school students from last year!

The infographic is split into two main sections. The left section has a chalkboard background with white text and graphics. The right section features a bright yellow background with a photograph of a young girl with curly hair and glasses, wearing a blue backpack and holding books. The United Way logo and name are in the top right of the yellow section.

2022 Backpack Program

| <u>Number per grade</u> | |
|-------------------------|-----|
| Primary | 675 |
| Intermediate | 537 |
| Senior | 328 |
| High School | 821 |

2361 Backpacks this year!

39 Local Agencies Distributed 1891 Backpacks

32,808 given out in 18 years!

Thank You

**United Way
Bruce Grey
Change starts here.**

Change starts here.



Concours d'Lemons: bridging worlds in the downtown





Attack Away Game Goal Challenge Returns



2022 Backpack Program

| | |
|------------------|-------------------------|
| Number per grade | |
| Primary | 575 |
| Intermediate | 597 |
| Senior | 328 |
| High School | 821 |
| Total | 2,361 Backpacks! |

39 Local Agencies Distributed 1891 Backpacks

Thank You

808 in years!

SIGN UP HERE:
Attack Away Game Goal Challenge

QR CODE



United Way
Bruce Grey

Change starts here.



BBQ with Owen Sound Police



Change starts here.



Moonlight Madness Apple Cider Stand

Change starts here.



Food Rescue

To assist OSHA RE we provided logistical support and 'lugged' over 52 000 kilograms (114 840 lbs) of rescued food from area grocery stores January to November. OSHA RE was able to staff the program November on.



Food Rescue “rescues” still usable grocery products and distributes them to area agencies and programs



EMS Kettle Bins



A Grey County Paramedic asked for a “bin” of homelessness support items for the ambulance. The “EMS Kettle Bin” was born.

Thank you to NPX for supporting these bins!





Utility Assistance Program

Energy poverty is the intersection of the cost of energy, the type of housing and the income of the household.

To support households, a variety of programs are available.

OESP – 94 applications - \$50 760 minimum value of the rebate to the applicants for 2022



Utility Assistance Program:

Provides a once every 12 months, a grant directly to the fuel supplier.

This data is July 2021 to June 2022

| Furnace oil | # homes | grants | avg grant | avg income | adults | kids | seniors |
|----------------|---------|--------------|-----------|--------------|--------|------|---------|
| Totals | 34 | \$ 23,400.00 | \$ 688.24 | \$24,674.73 | 47 | 27 | 8 |
| 2020-21 | 41 | \$ 24,600.00 | \$ 600.00 | \$20,638.27 | 57 | 33 | 6 |
| Propane | | | | | | | |
| Totals | 68 | \$ 47,224.09 | \$694.47 | \$ 20,899.70 | 88 | 55 | 19 |
| 2020-21 | 57 | \$ 33,750.00 | \$ 592.11 | \$ 22,096.94 | 69 | 27 | 15 |
| Wood | | | | | | | |
| Totals | 150 | \$96,008.07 | \$640.05 | \$20,497.26 | 180 | 72 | 48 |
| 2020-21 | 130 | \$78,244.67 | \$ 601.88 | \$24,179.87 | 165 | 86 | 39 |



Utility Assistance Program:

Applicants to the provincial electricity and natural gas support programs often need our help to file an application.

This data is July 2021 to June 2022

| | # homes | arrears | avg arrears | grants | avg grant | avg income | adults | kids | seniors |
|---------------------------|---------|--------------|-------------|-------------|-----------|-------------|--------|------|---------|
| Electricity Totals | 61 | \$143,289.28 | \$2,349.00 | \$46,830.38 | \$767.71 | \$17,643.90 | 73 | 39 | 8 |
| 2020-21 | 60 | \$57,852.95 | \$964.22 | \$28,136.02 | \$468.93 | \$16,738.37 | 104 | 58 | 1 |
| Natural Gas Totals | 21 | \$17,983.46 | \$856.36 | \$9,189.61 | \$437.60 | \$18,642.38 | 28 | 7 | 2 |
| 2020-21 | 22 | \$19,318.81 | \$878.13 | \$10,431.30 | \$474.15 | \$21,254.52 | 27 | 19 | 1 |

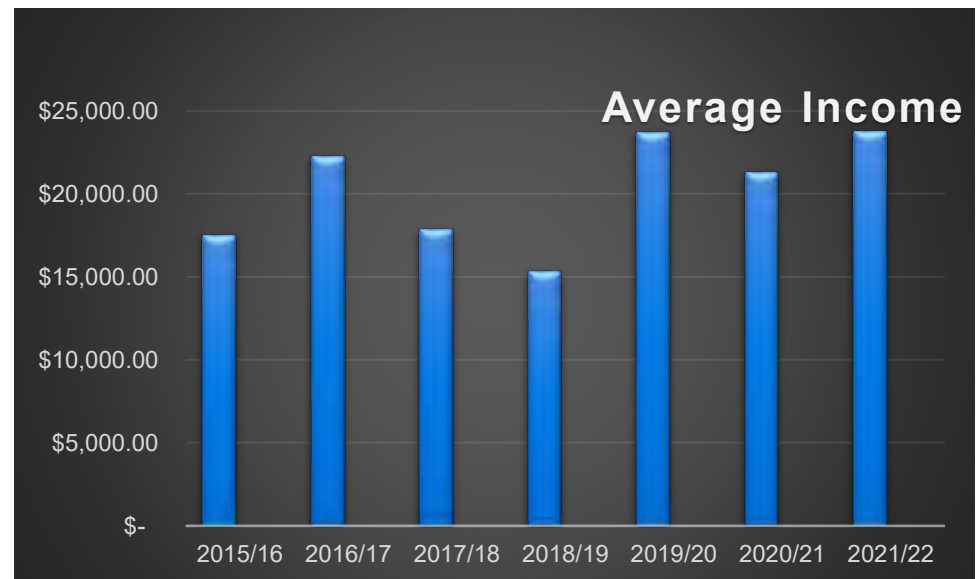


Utility Assistance Program:

The primary reason for applying to the program is lack of income

Average Household income over the years of data tracking

| Year | Average Household Income |
|---------|--------------------------|
| 2015/16 | \$17,500.00 |
| 2016/17 | \$22,258.00 |
| 2017/18 | \$17,832.00 |
| 2018/19 | \$15,305.19 |
| 2019/20 | \$23,715.78 |
| 2020/21 | \$21,300.44 |
| 2021/22 | \$ 23,765.66 |



Change starts here.



safe communities™
bruce peninsula



Since 2016 the Bruce Peninsula Safe Communities Committee has been helping address stunt driving on highway 6.

The stretch of Highway 6 between Wiarton and Tobermory is about 76 kilometres in length, accounting for only 0.06 per cent of the nearly one hundred and twenty thousand kilometers of paved, roads in Ontario.

Yet, nearly two per cent of the twelve thousand stunt driving charges laid in Ontario in 2020 were laid on that section of Highway 6.

DON'T LET YOUR CAR VISIT THE BRUCE PENINSULA LONGER THAN YOU DO.

IN 2020 THE OPP CHARGED 221 DRIVERS WITH STUNT DRIVING ON HIGHWAY 6 BRUCE PENINSULA

- ✓ YOU WILL BE CAUGHT.
- ✓ YOU WILL BE CHARGED.
- ✓ YOU WILL LOSE YOUR CAR FOR 14 DAYS.

OBEY THE SPEED LIMIT.

MINIMUM FINE: \$1200

50% INCREASE IN INSURANCE RATES

POSSIBLE JOB LOSS

#dOntPaythePrice

#speedkills





Addressing stunt driving

| | 2022 | 2021 | 2020 | 2019 | 2018 | 2017 |
|-----------------------|--------|--------|--------|-------|-------|-------|
| Province | 11 440 | 12 257 | 12 381 | 9 675 | 8 527 | 7 700 |
| Percent increase yoy | -7% | -1% | 28% | 13% | 11% | 7% |
| decrease 2020-2022 | -17% | | | | | |
| Grey/Bruce | 131 | 149 | 333 | 287 | 217 | 119 |
| Percent increase yoy | -12% | -55% | 16% | 32% | 82% | -11% |
| decrease 2020-2022 | | | | | | |
| Highway 6 | 25 | 32 | 221 | 191 | 130 | 43 |
| Wiaraton to Tobermory | -22% | -86% | 16% | 47% | 202% | -2% |
| decrease 2020-2022 | | | | | | |



Thank You

FOR DONATING TO OUR

**UTILITY
ASSISTANCE**

211

**S.O.S
OUTREACH**

**FINANCIAL
LITERACY**

**COMMUNITY
FUND**

**OUR PARTNER
LOCAL AGENCIES**

**PANDEMIC
RESPONSE**

**HOPE FOR OUR
KIDS FUND**

**BACKPACK
PROGRAM**



United Way
Bruce Grey



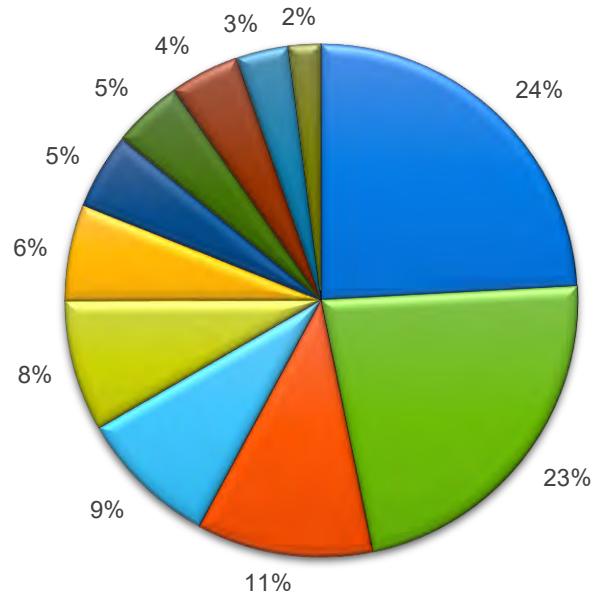


United Way: 2022 Financial Position

| | 2022 | 2021 |
|-------------------------------------|------------------------|------------------------|
| Total Revenue | \$ 1,482,432.00 | \$ 1,719,420.00 |
| Fundraising expenditures | \$ 167,078.00 | \$ 154,154.00 |
| Net revenue for community impact | \$ 1,315,354.00 | \$ 1,565,266.00 |
| Community impact expenditures | \$ 1,378,357.00 | \$ 1,511,093.00 |
| Excess revenue over expenditures | -\$ 62,997.00 | \$ 24,173.00 |
| Fund balances at beginning of year | \$ 336,565.00 | \$ 271,206.00 |
| Fund balances at end of year | \$ 273,568.00 | \$ 325,379.00 |



Community Investment



- Utility Assistance Program
- Other Programs & Admin
- Pandemic Fund
- Community Impact Grants
- SOS Outreach Project
- Backpack Program
- Food Security Program
- Financial Literacy Program
- Poverty Task Force
- 211
- Hope for Our Kids

| | |
|--|------------------------|
| Utility Assistance Program | \$ 327,684.00 |
| Other Programs & Admin | \$ 306,941.00 |
| Pandemic Fund | \$ 150,728.00 |
| Community Impact Grants | \$ 120,000.00 |
| SOS Outreach Project | \$ 111,882.00 |
| Backpack Program | \$ 82,624.00 |
| Food Security Program | \$ 65,371.00 |
| Financial Literacy Program | \$ 60,123.00 |
| Poverty Task Force | \$ 59,158.00 |
| 211 | \$ 45,000.00 |
| Hope for Our Kids | \$ 27,647.00 |
| Total Investment in the community | \$ 1,357,158.00 |



Mission Statement of the United Way:

To meet unmet needs in Bruce and Grey Counties by mobilizing volunteer and financial resources in the common cause of caring.



Fit Body Boot Camp Kincardine collecting supplies for the Backpack Program

Mandate of the United Way:

The United Way is an autonomous organization, which builds upon the strength of volunteers and voluntary action by engaging the whole community for the benefit of the whole community. Governed by a local Board of Directors along with other volunteers and staff, we help to build caring communities and respond to a broad range of human needs on a local scale.



United Way Bruce Grey

[380 9th Street East Owen Sound ON N4K 1P1](https://www.unitedwayofbrucegrey.com)

[519 376 1560](tel:5193761560) | [800 794 1728](tel:8007941728)

www.unitedwayofbrucegrey.com

Give. Volunteer. Act.

Reg. Charity Number: 89876 8627 RR0001